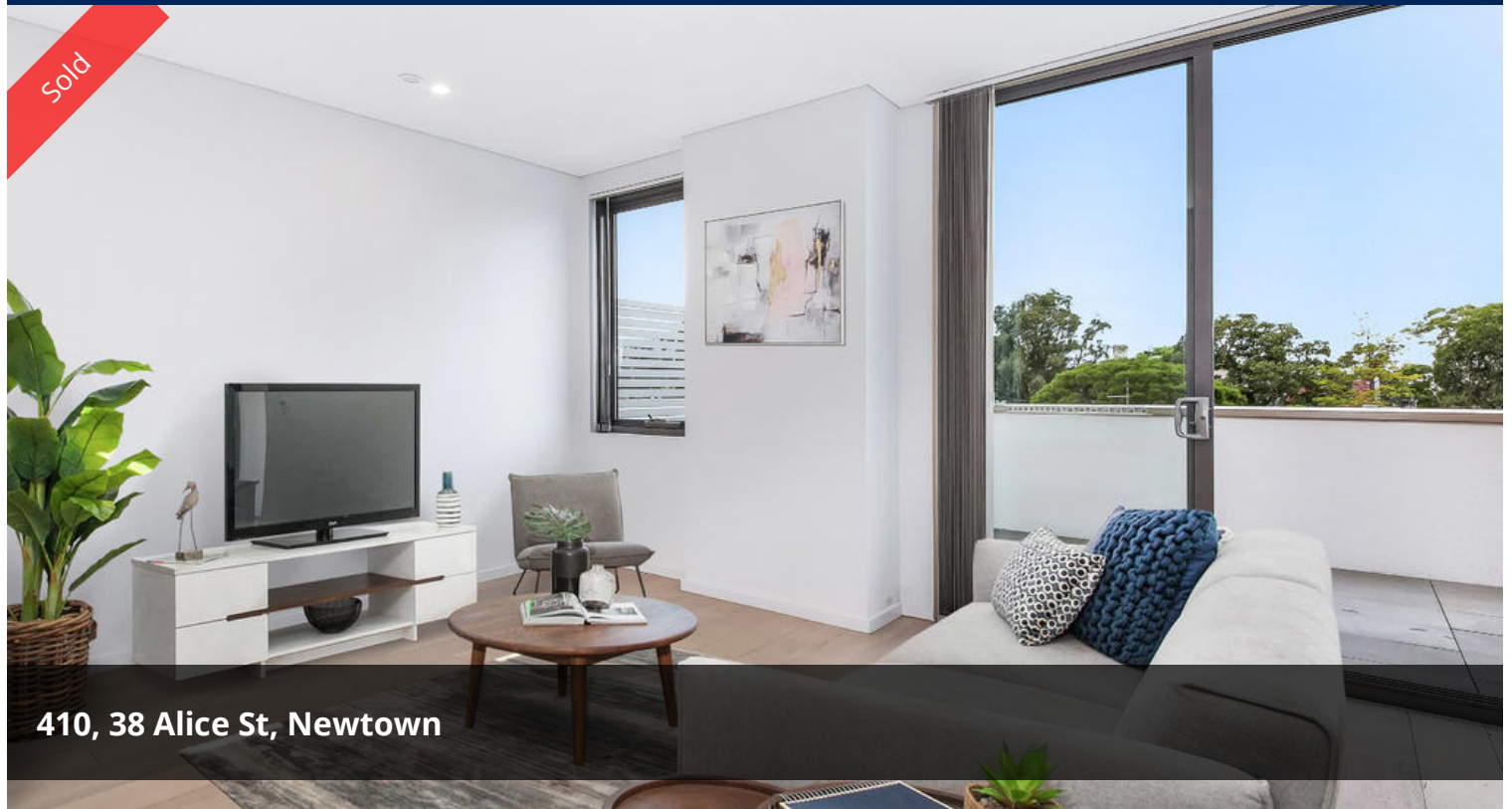
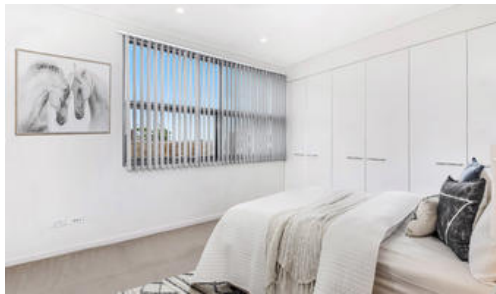


Sold



410, 38 Alice St, Newtown



## Total 102 Sqm One Bed Room & Enormous Balcony With District Views

This 4th floor apartment is situated in the boutique building, 'Industri', that was designed by award-winning architect, SJB. Cleverly designed to welcome in the sun and warm the heart is this expansive one-bedroom apartment. Conveniently surrounded by restaurants, bars, theatres, clubs, coffee shops, shopping centres, transport, hospitals and schools, incorporates both the ultimate inner city living with privacy and sophisticated interiors.

- Expansive living space with floating floorboards and an abundance of natural light coming from the sky light and vast sliding doors
- Generous size bedroom with huge built in wardrobe
- Contemporary kitchen featuring polished stone bench tops, stainless steel splash backs and Miele appliances and fixtures
- Enormous balcony with beautiful district views perfect for entertaining

1 bed 1 bath 1 car

Price	SOLD
Property Type	Residential
Property ID	1241

### Agent Details

Jeff (Kwok Fu) Chau - 0435 949 557  
jeff.chau@bmegroup.com.au  
John (Junjie) Zhu - 0426 252 527  
john.zhu@bmegroup.com.au

### Office Details

BME Group/Sydney CBD  
Unit 87 515 Kent St Sydney NSW  
2000 Australia